



ICU Central Line Associated Blood Stream Infections (CLABSI) Prevention

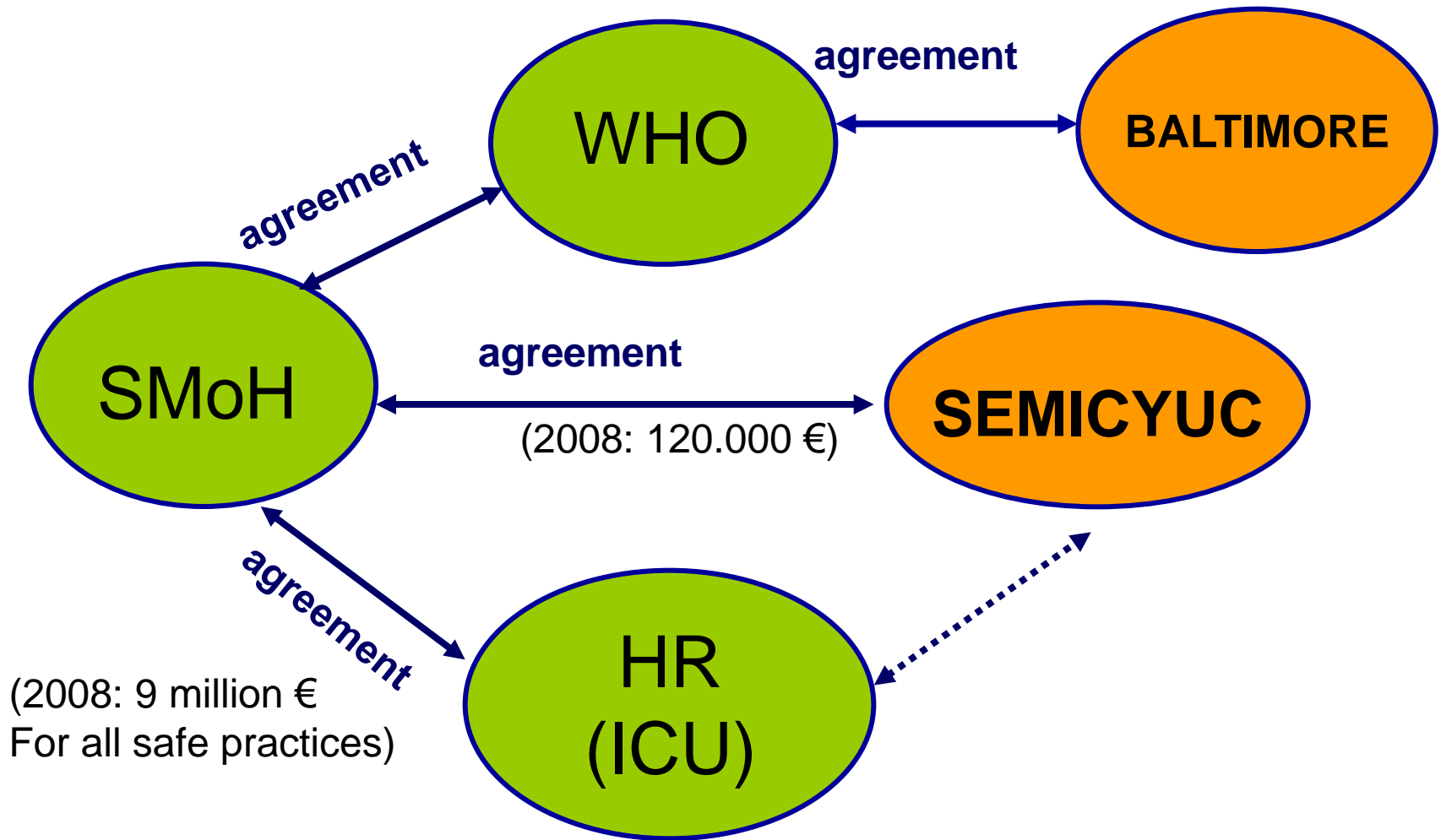
Bacteriemia zero

Agra Y. MD, PhD.. Senior Adviser. Quality Agency. SMOH

OBJECTIVES

- Reduce ICU CLABSI (< 4 episodes per 1000 CL days)
- Create through the HR an ICU network to apply effective Safe Practices
- Promote Safety Culture in the Spanish ICU
- Improve CLABSI information system

GENERAL FRAMEWORK



GENERAL FRAMEWORK

- **Advisory Committee:**

- SMoH, WHO, SEMICYUC, patients

Functions

Approve Project, suggestions, spreading

- **Executive Committee:**

- SMoH, WHO, SEMICYUC HR representative

Functions

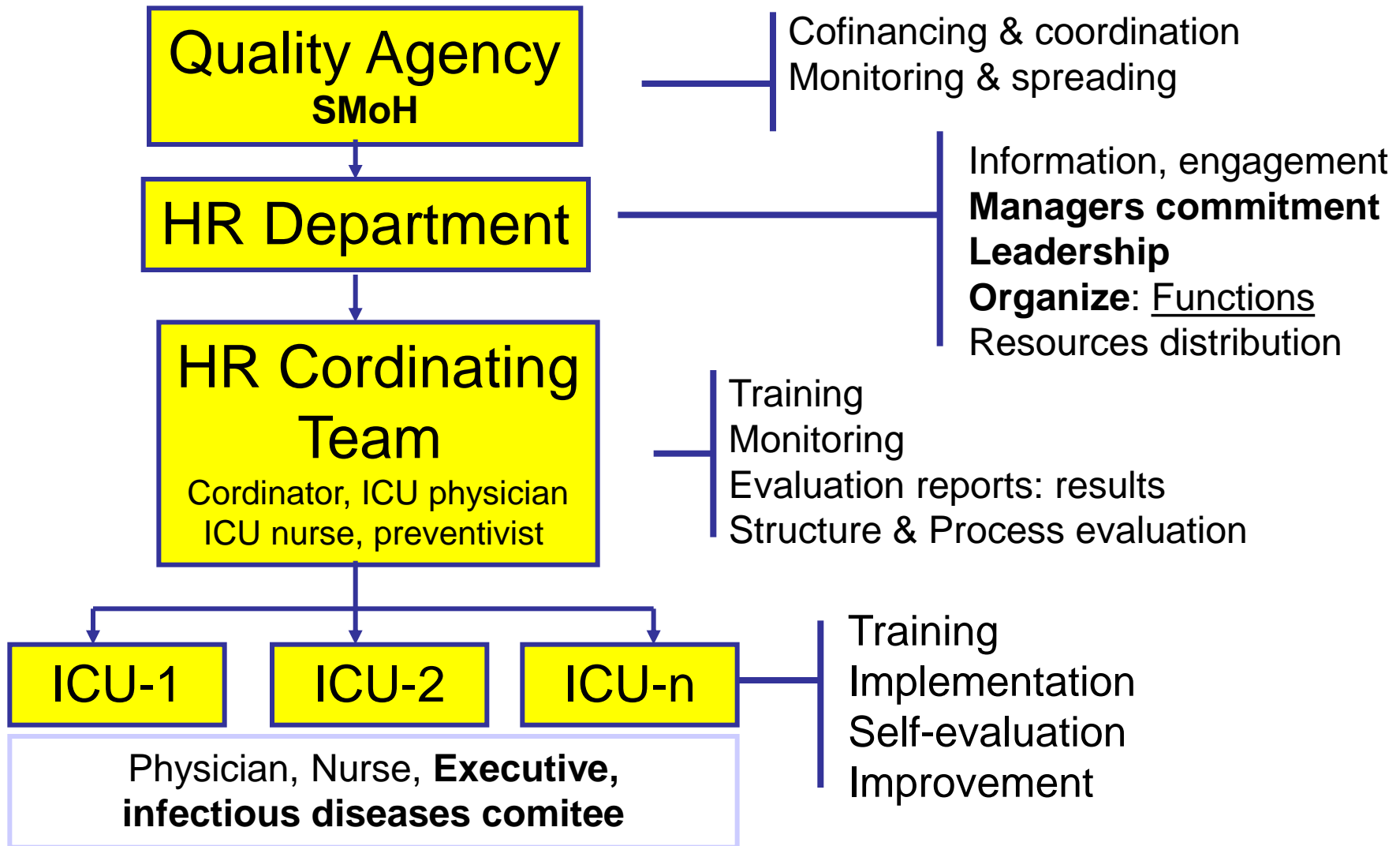
Project design, development, follow-up, executive capacity

- **Managerial Committee:**

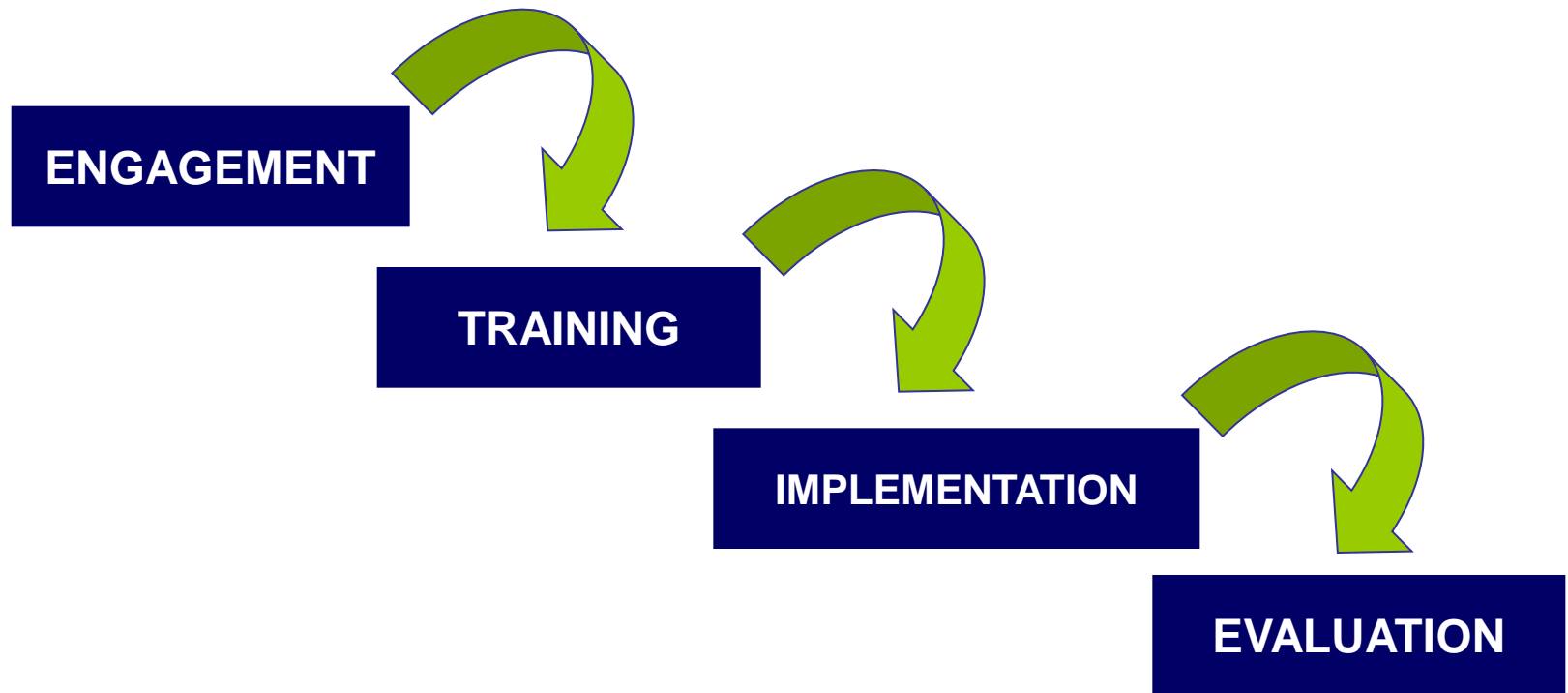
- SMoH, SEMICYUC, HR:

Functions at antional level: planification, Implementation, Monitoring, Evaluation, Suggestion of improvements

NATIONAL ORGANIZATION

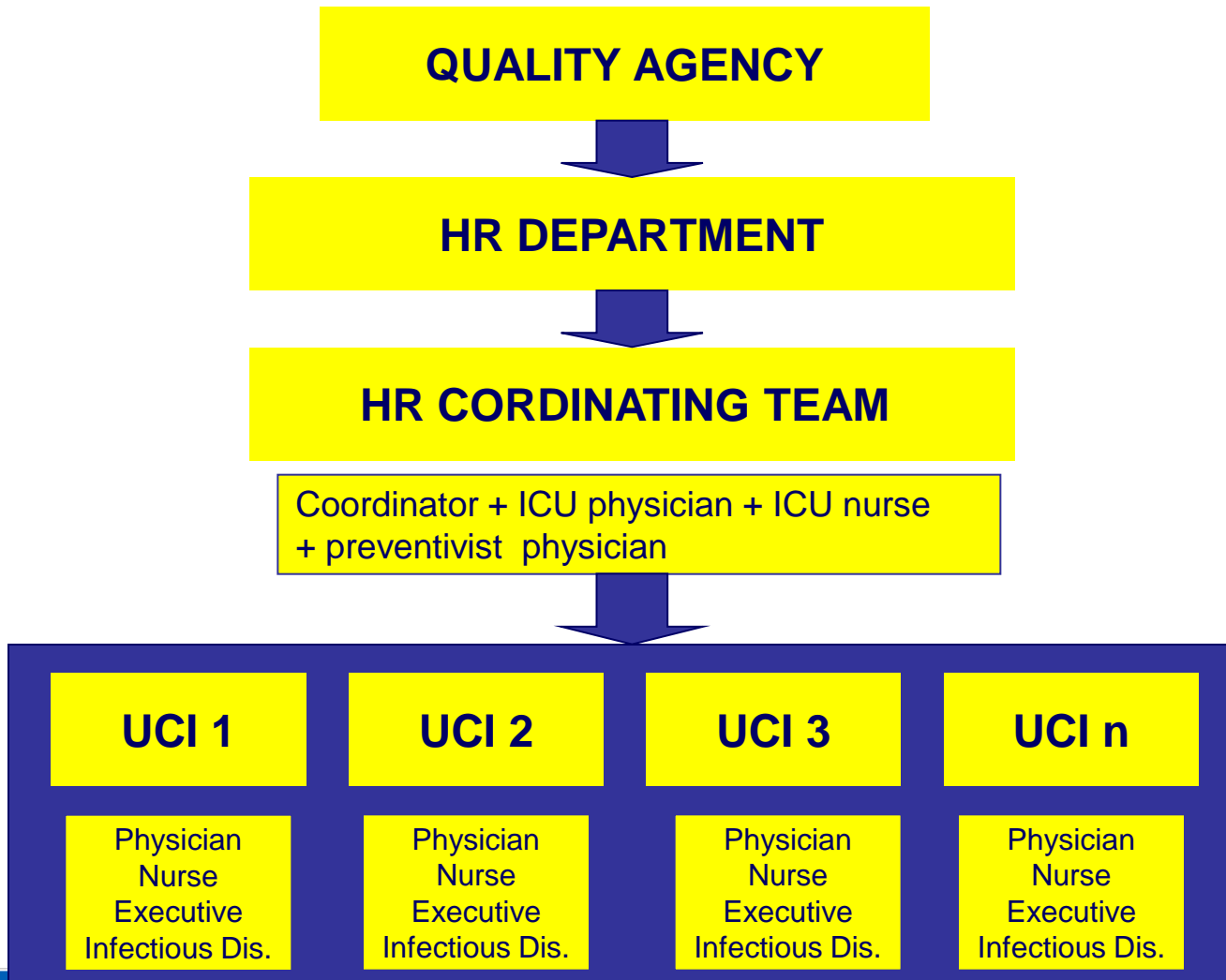


Project Phases



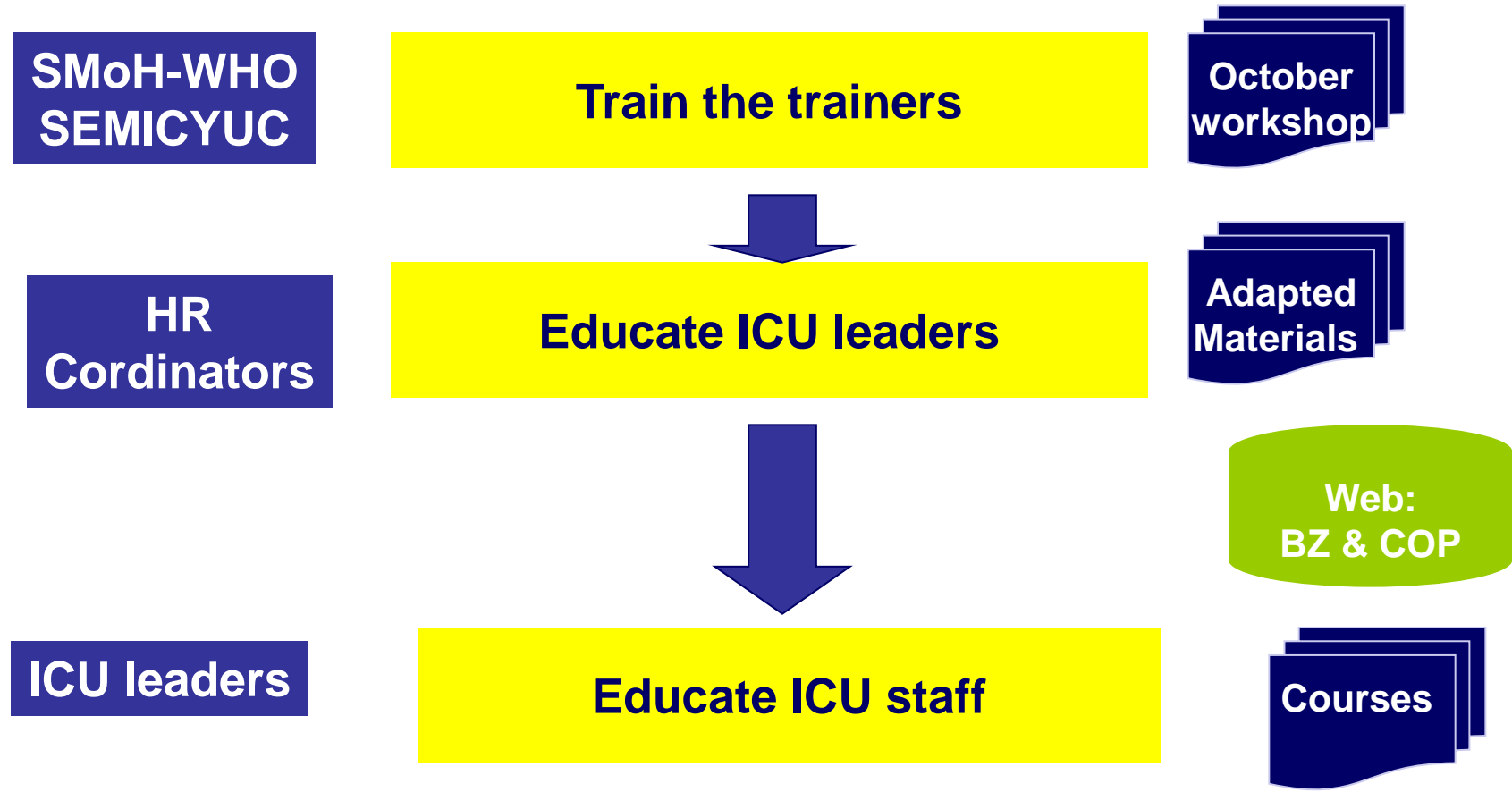
Level 0

ENGAGEMENT



Patient Safety Strategy of the Spanish National Health System

EDUCATION



IMPLEMENTATION

PREPARE

Local context adaptation

Information campaign

DATA COLLECTION

Survey

SAFETY CULTURE

Protocol

MULTIFACTORIAL INTERVENTION

DATA
BASE

SAFETY CULTURE

CLABSI

Leader team

CL insertion

Daily goals

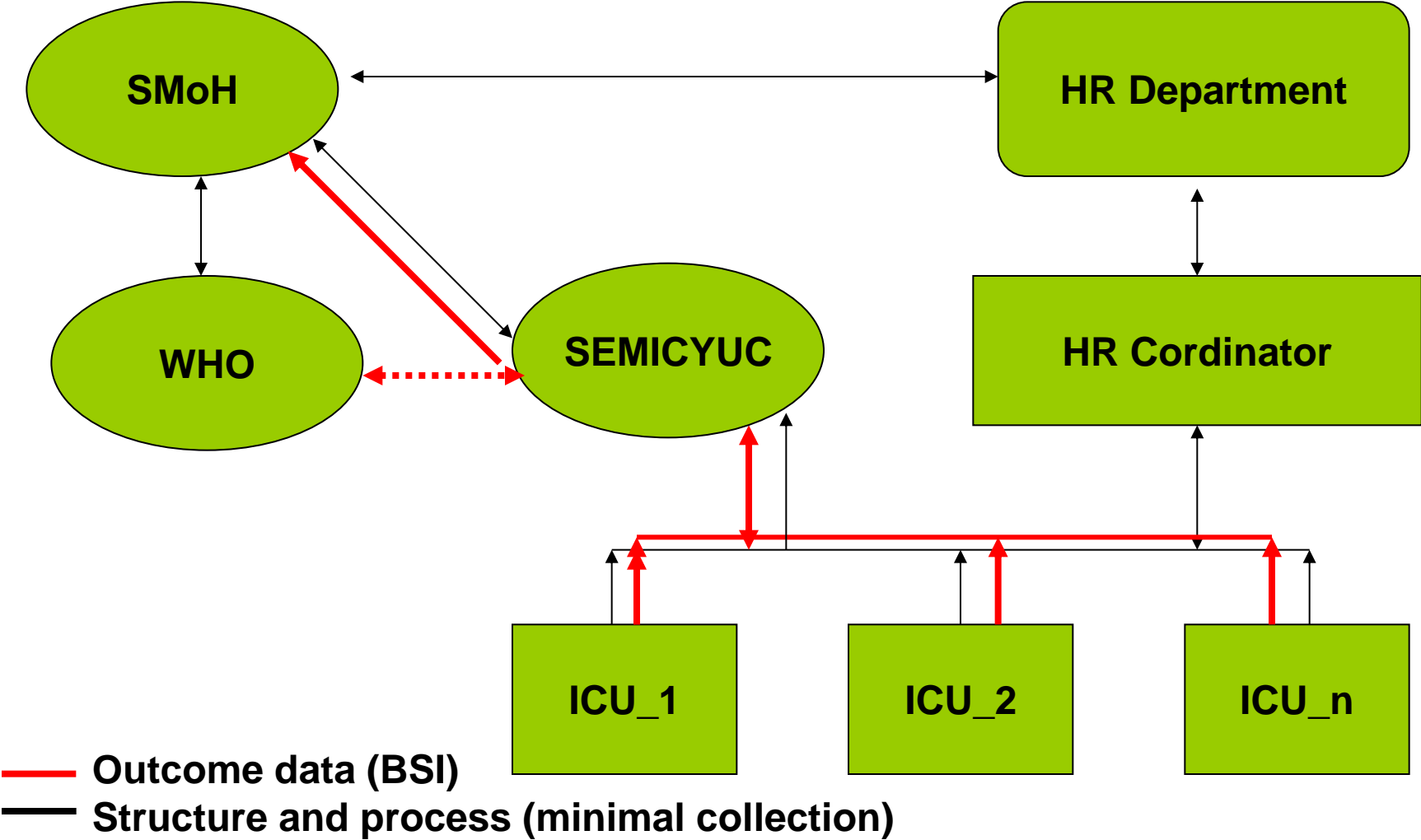
CL monitoring

CL cart

Monthly meeting

CLABSI measurement

EVALUATION



Bacteriemia **zero**

STOP-BRC

1. Appropriate hand hygiene
2. Skin preparation with clorhexidine
3. Full barriers during insertion
4. Subclavian localization
5. Removal unnecessary CL
6. Hygienic CL management

Comprehensive Safety Plan

1. Evaluate safety culture
2. Education on safety culture
3. Identify defects in clinical practice
4. Establish alliances with Executive Board
5. Learn from defects

A red circular logo with the text "ICU Safety Team" inside. Two large red arrows originate from the top and bottom of the circle, pointing towards the "STOP-BRC" and "Comprehensive Safety Plan" boxes respectively.

**ICU
Safety
Team**

Bacteriemia zero

Navigation Guide

Tools



Checklist insertion

Daily goals

Inventory +register

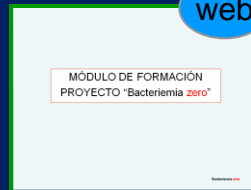
Culture survey

Leader team

Safety problems

Learn defects

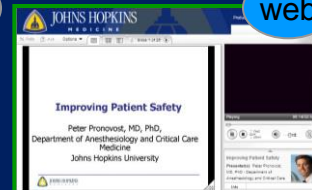
Training material



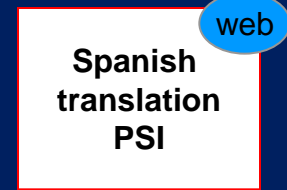
Course STOP-BRC



Test STOP-BRC



Course PSI

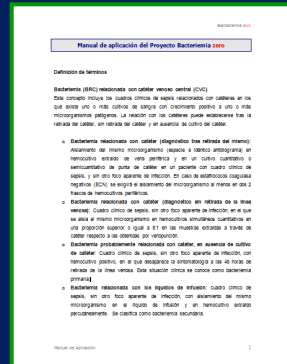


Spanish translation PSI

Protocol



Posters



Summary

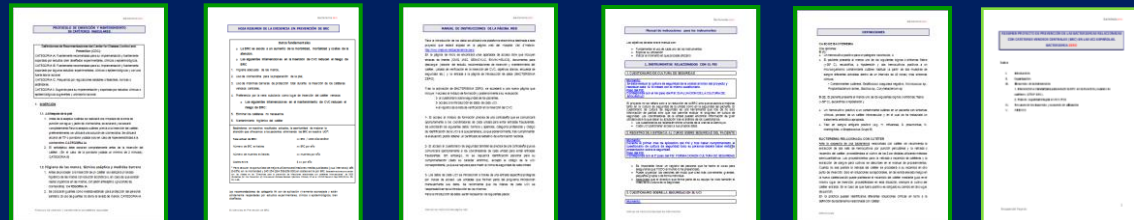


STOP-BRC



PSI

Support docs



Protocol insertion

Evidence summary

Web Manual

Tools Manual

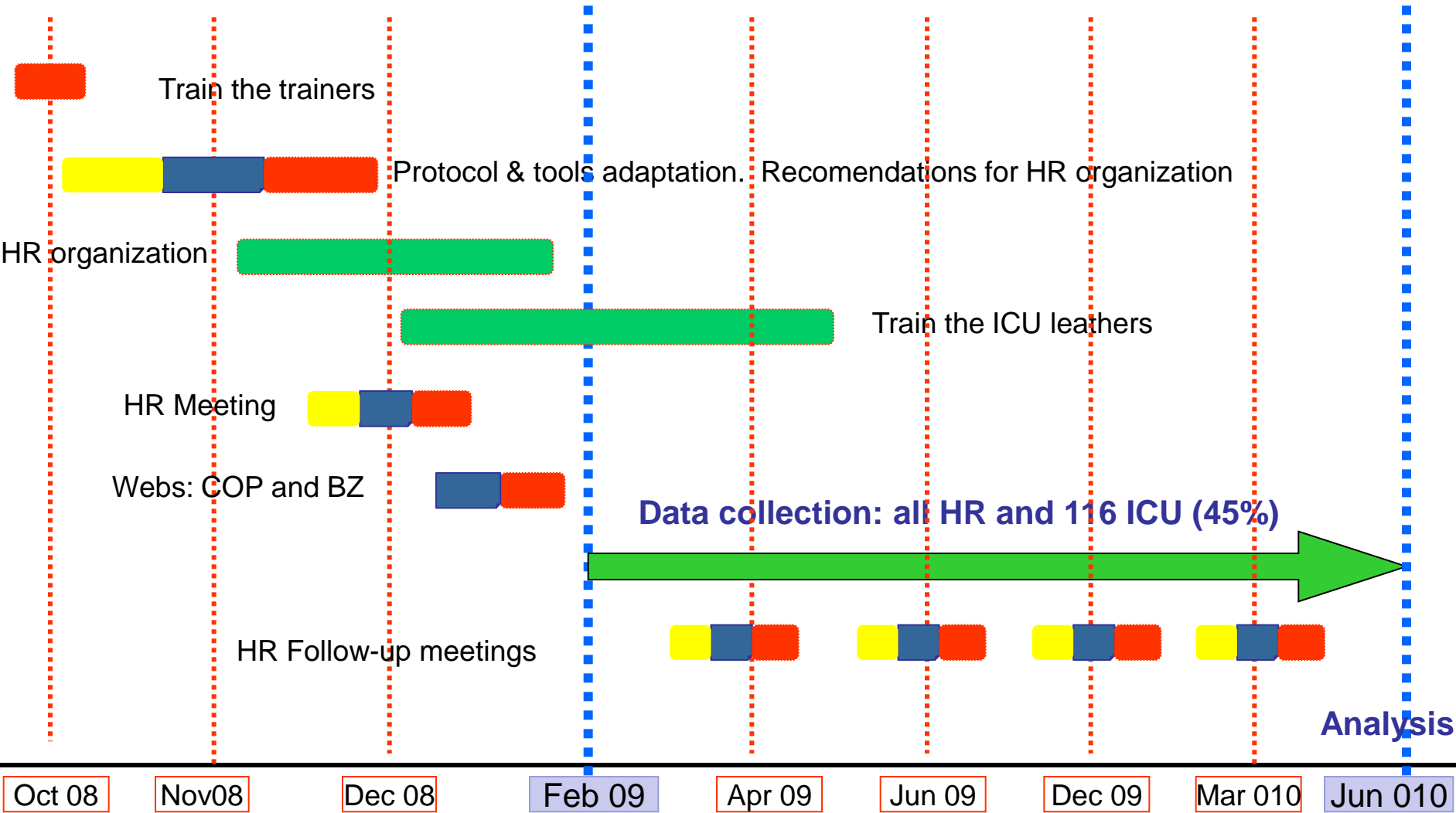
Definitions

Summary

Implementation Guide

CALENDAR

WHO/Baltimore
 SEMICYUC
 HR
 SMoH



Oct 08
Nov08
Dec 08
Feb 09
Apr 09
Jun 09
Dec 09
Mar 010
Jun 010